

# Photographs

*Revision A*

1. Front view
2. Rear view
3. IF side view
4. Inside 1
5. Inside 2
6. Inside 3
7. Inside 4
8. Inside 5
9. Inside 6
10. Inside 7
11. Inside 8
12. Inside 9
13. Inside 10
14. MA Board surface
15. MA Board reverse
16. IF Board surface
17. IF Board reverse
18. SW Board surface
19. SW Board reverse
20. LED Board surface
21. LED Board reverse
22. IR Board surface
23. IR Board reverse
24. IRF Board surface
25. IRF Board reverse
26. SEN Board surface
27. SEN Board reverse
28. TH Board surface
29. TH Board reverse
30. WFD Board surface
31. WFD Board reverse
32. Wireless LAN Module surface
33. Wireless LAN Module reverse
34. LDDR Board surface
35. LDDR Board reverse
36. LMDR Board surface
37. LMDR Board reverse
38. MCP Board surface
39. MCP Board reverse
40. Filter Board surface (Model: AC20262-9LF)
41. Filter Board reverse (Model: AC20262-9LF)
42. Power Supply Board surface (Model: ZUEPG72I)
43. Power Supply Board surface without Heatsink (Model: ZUEPG72I)
44. Power Supply Board reverse (Model: ZUEPG72I)
45. Power Supply Board for Laser Driver surface (Model: DC5220LF)
46. Power Supply Board for Laser Driver surface without Heatsink (Model: DC5220LF)
47. Power Supply Board for Laser Driver reverse (Model: DC5220LF)
48. Remote Controller Unit surface
49. Remote Controller Unit reverse
50. Remote Controller Board surface
51. Remote Controller Board reverse







LAN HDBaseT

HDMI 1 HDMI 2

Computer 1

Computer 2

USB-A Service

HDMI  
HDBaseT  
CONTROL4  
CONTROL4

Audio 1

Audio 2

Audio Out

RS-232C

Menu Esc  
Source Search  
Enter  
AV Mute

1 2 3 4 5 6 7 8 9 10 11 12 13 14 15 16 17 18 19 20 21 22 23 24 25 26 27 28 29 30 31 32 33 34 35 36 37 38 39 40 41 42 43 44 45 46 47 48 49 50 51 52 53 54 55 56 57 58 59 60 61 62 63 64 65 66 67 68 69 70 71 72 73 74 75 76 77 78 79 80 81 82 83 84 85 86 87 88 89 90 91 92 93 94 95 96 97 98 99 100

5 6 7 8 9 10 11 12 13 14 15 16 17 18 19 20 21 22 23 24 25 26 27 28 29 30 31 32 33 34 35 36 37 38 39 40 41 42 43 44 45 46 47 48 49 50 51 52 53 54 55 56 57 58 59 60 61 62 63 64 65 66 67 68 69 70 71 72 73 74 75 76 77 78 79 80 81 82 83 84 85 86 87 88 89 90 91 92 93 94 95 96 97 98 99 100



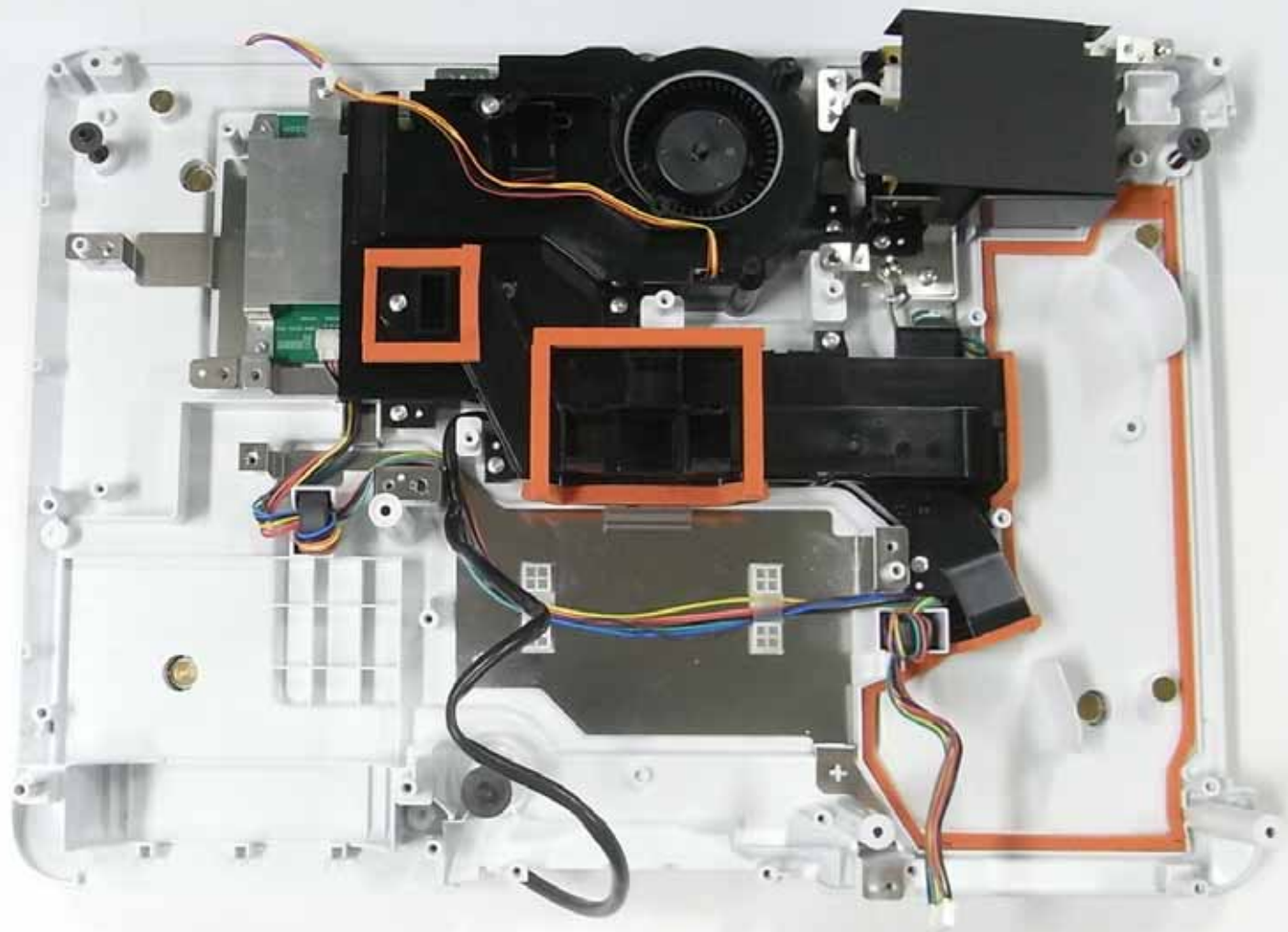




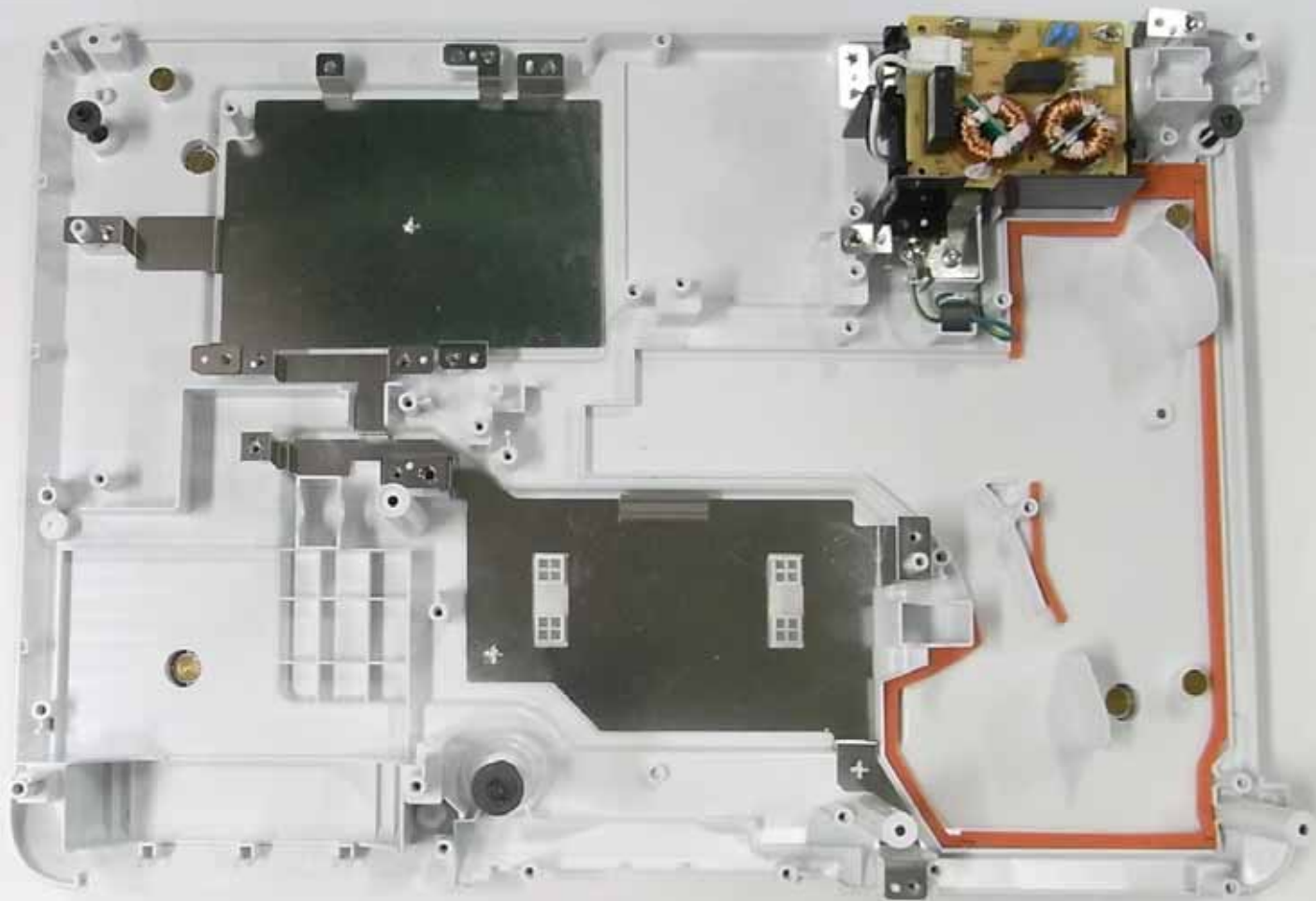
























H901 IF\_S2  
2187718

EPSON

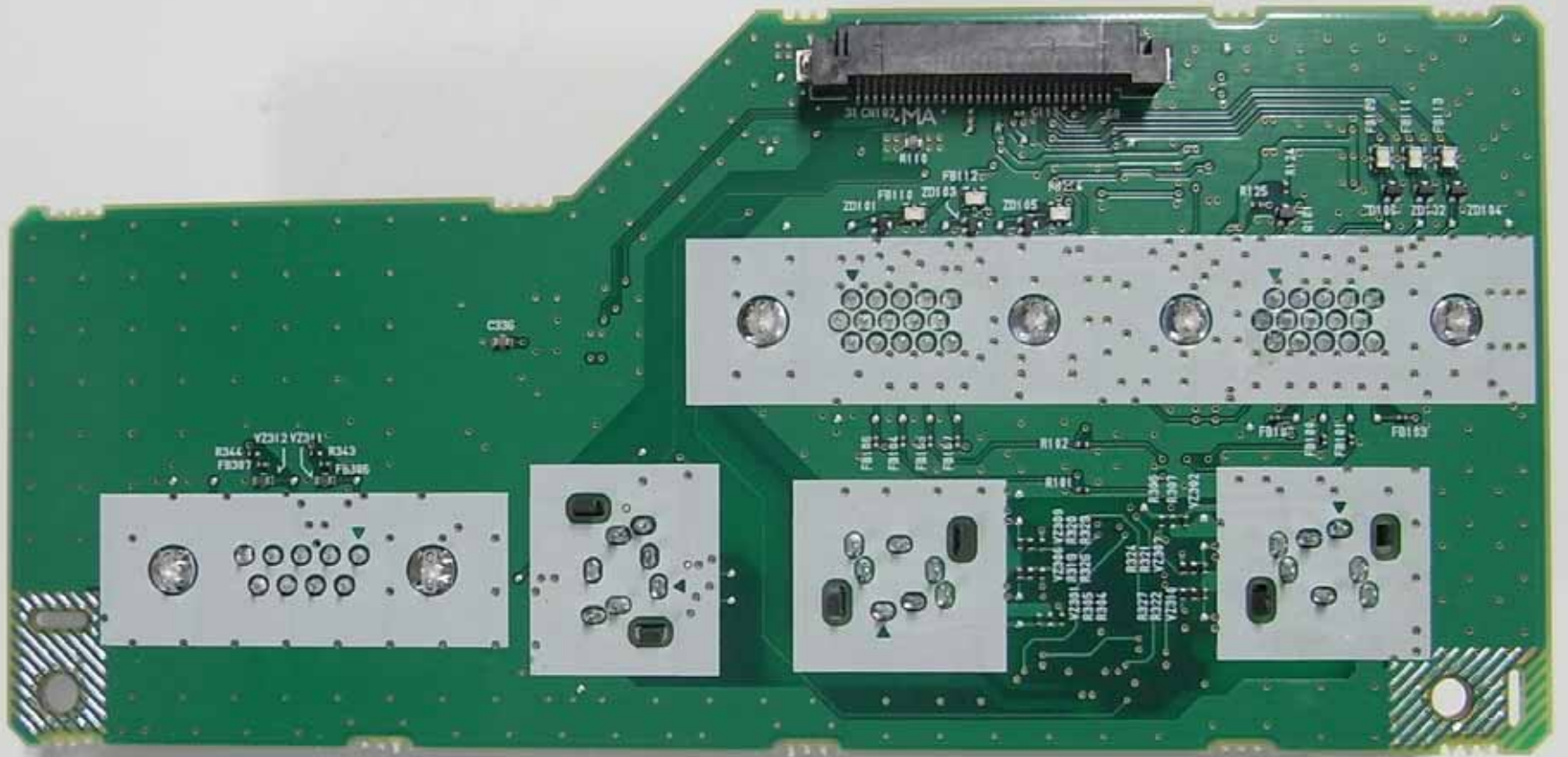
IF-087

PC1-OUT

PC2-OUT

AU-OUT

Ver A B C D E F EC 1 2 3 4 5 6



SW-152

H901 SW\_S2  
21 8771 9

SW1  
POWER

SW2  
SOURCE

SW4  
MENU



SW3

SW6  
ENTER



SW5



SW9

ESC

SW8

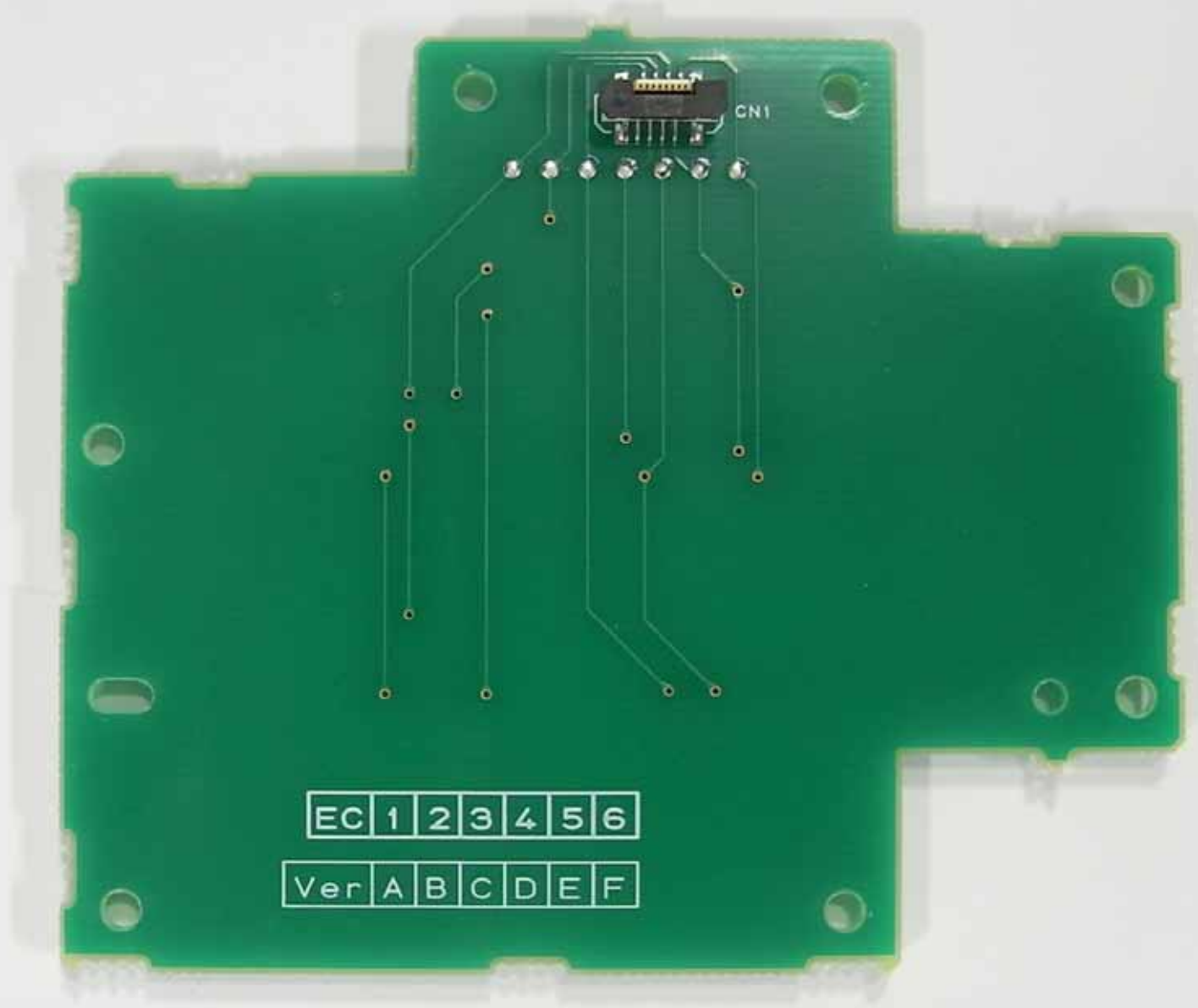
SW10  
A/V MUTE



SW7

EPSON

ASKPCB  
94V-0 E-2  
E239218



EC 1 2 3 4 5 6

Ver A B C D E F



**EPSON**

ASK PCB  
94V-0 K-2

E239218

LED-248

CN20

LD25

WLAN

LD24

FILTER

LD23

TEMP

LD22

LASER

LD21

STATUS

LD20

POWER



EC	1	2	3	4	5	6
----	---	---	---	---	---	---

Ver	A	B	C	D	E	F
-----	---	---	---	---	---	---

H901 LED\_S2

2187721





ASKPCB

94V-0

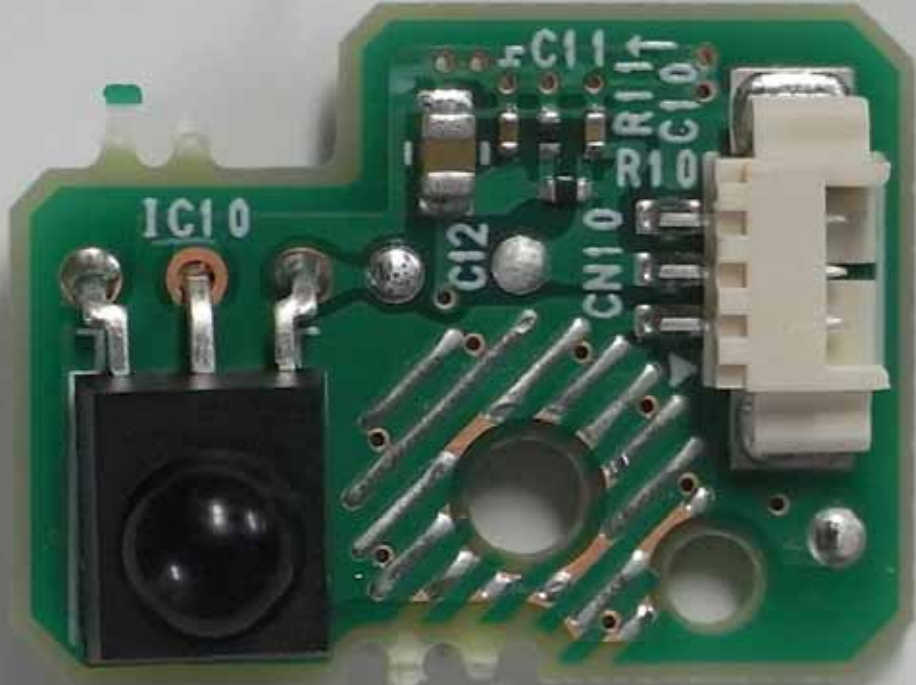
H901 IRLS2

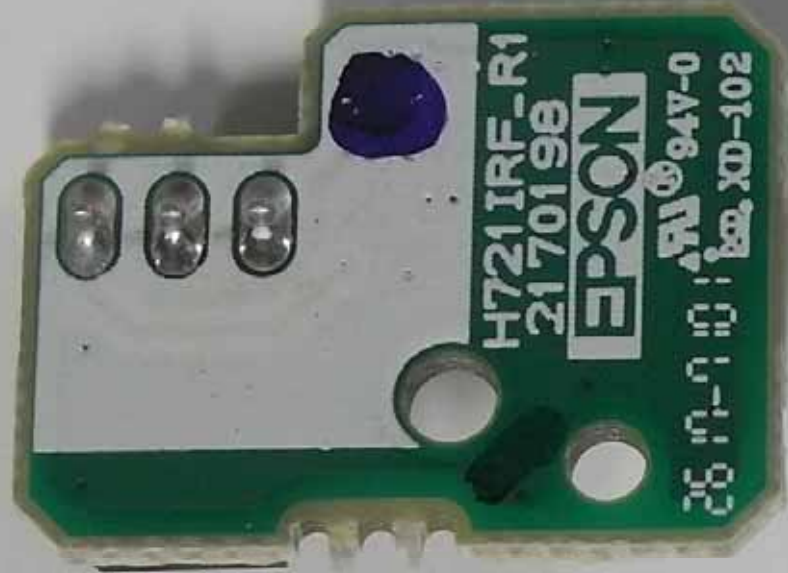
EPSON

FAJ E239218 K-2

2187720







H721 IRF-R1  
2170198

**EPSON**

© 94V-0  
26 17-9 101  
EPSON XD-102





EPSON

E23021A

94V-0

H8685EN\_S2

: : : : K-2

C52

R52 3

R53

C53

IC50

2185991



FB51  
TH50  
FB50

FB52

CNS0

TH30



17285

**EPSON**

WJ (WL) ▲ W400 94V-0

H550TH\_R1

2153289



2 1  
CN30



CP 8094V-0 E243951

EC 1 2 3 4 5 6

H901 WFD\_S2 2187184

TOSHIBA  
IC5300  
256Kbit 3.3V

Ver B C D E F

EPSON

411732 ::

MA







EPSON 217762500  
Model: WLU5000-D101(RoHS)  
Wireless LAN Module  
SEIKO EPSON CORPORATION  
ASKEY COMPUTER CORP.  
FCC ID: BKMAE-WLU5000  
IC: 1052D-WLU5000  
CNC ID: C-16265  
201-160331  
5.15GHz-5.25GHz帯は屋内専用  
Rating 5V 800mA Made in China

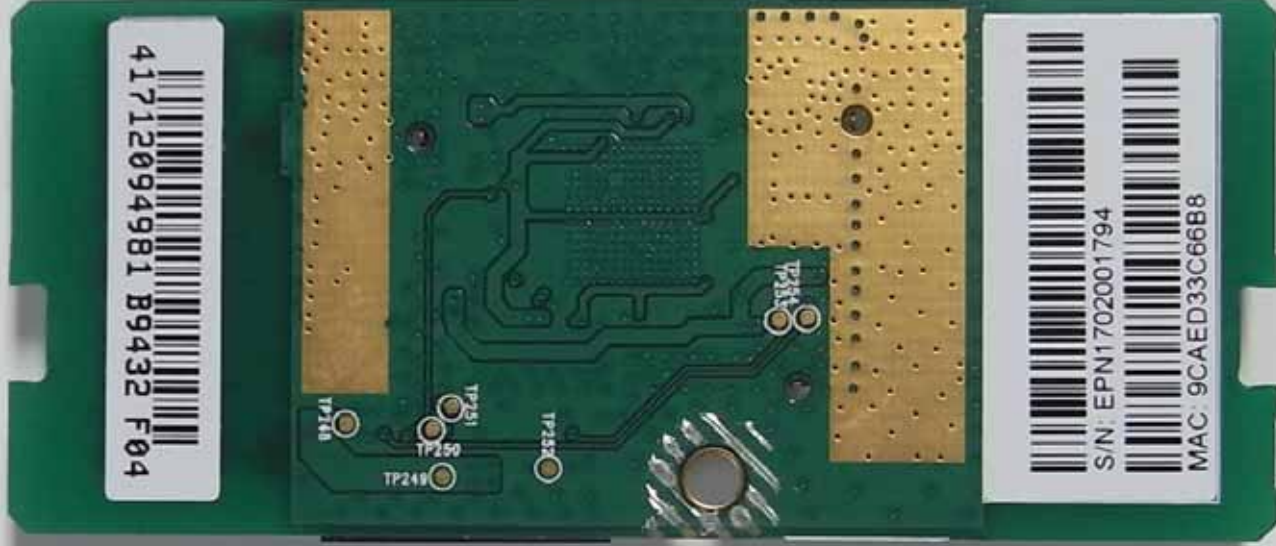


CP 88  
94V-0  
E243951  
1545

08B1-2CE3100

WLU5000-D101(RoHS) REV:3

41712094981 B9432 F04



S/N: EPN1702001794



MAC: 9CAED33C66B8



H901LDDR S2

EPSON

LDD-162

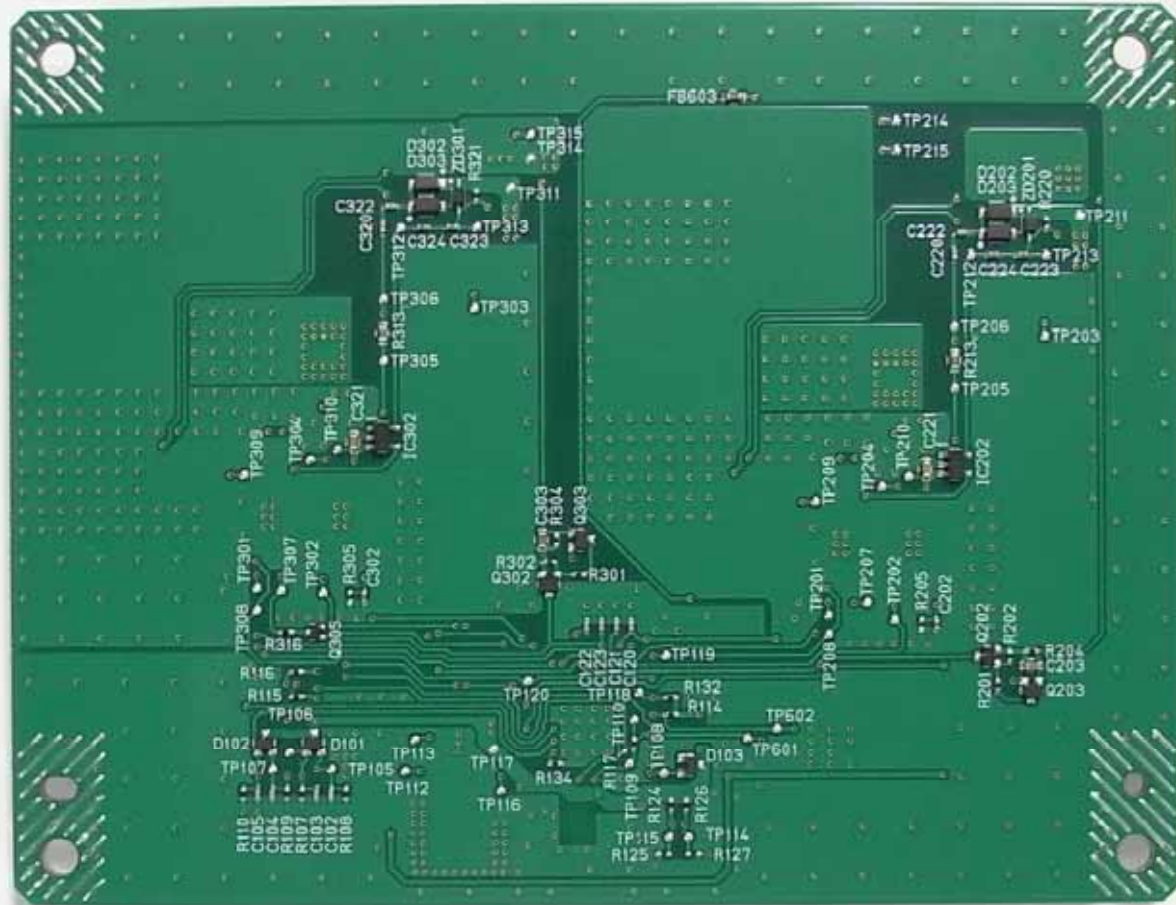
94V-0

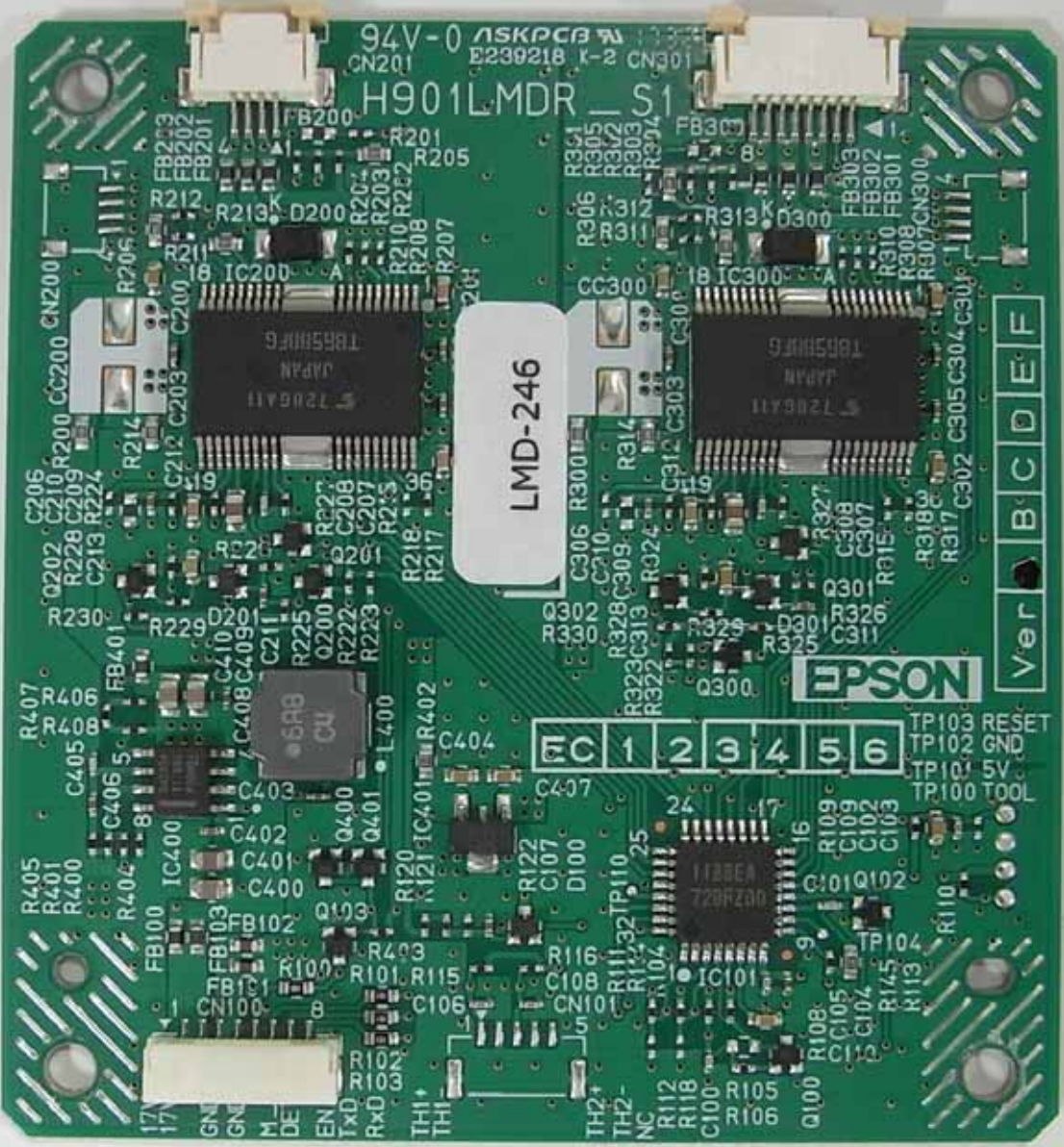
EC123456  
Ver 1.23456

ASKPCB  
94V-0 E-5  
E2209210

from P5LDD CN601

TTY  
GND  
PWR2  
EN  
5V  
TP10  
RESET TP104





94V-0 ASKPCB  
E239218 K-2 CN30

H901 LMDR S1

LMD-246

EPSON

Ver B C D E F

FC 1 2 3 4 5 6

TP103 RESET  
TP102 GND  
TP104 5V  
TP100 TOOL

17V  
GND  
GND  
M  
DE  
EN  
Tx  
Rx  
TH  
TH

TH2+  
TH2-  
NC  
R112  
R118  
C100  
R105  
R106

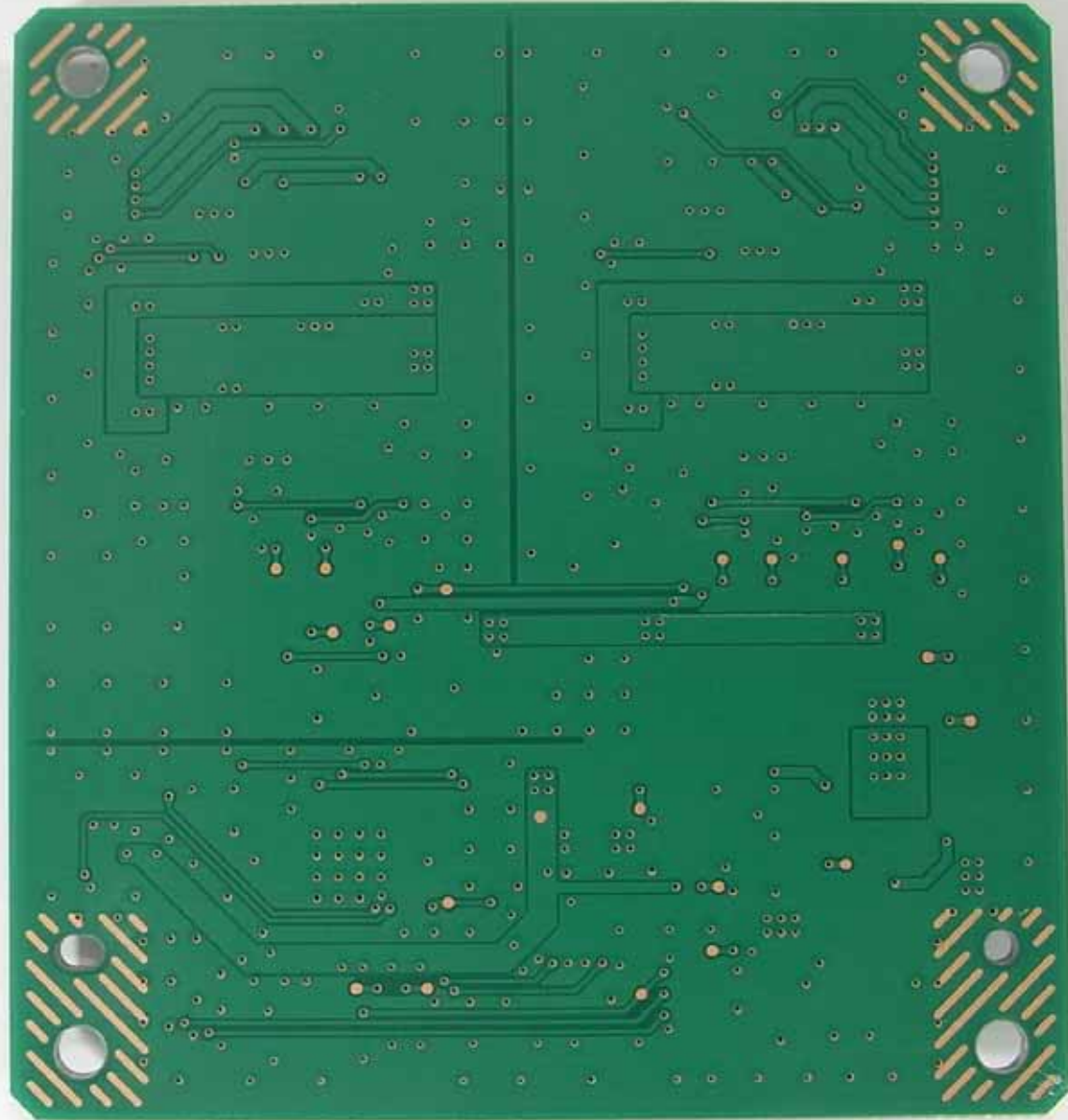
Q100  
R108  
C105  
C104  
C102  
R145  
R113  
R110

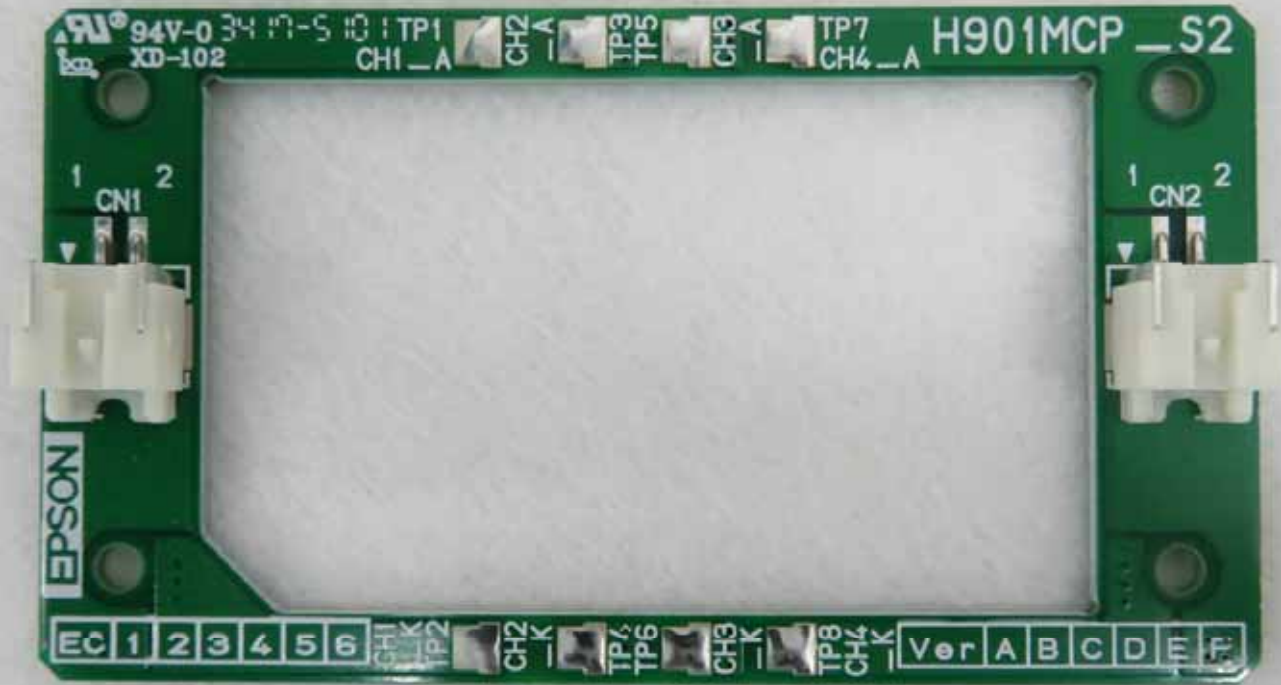
R405  
R401  
R400  
R402  
R404  
R406  
R408  
C405  
C403  
C402  
C401  
C400  
FB103  
FB102  
R100  
R101  
R102  
R103  
R104  
R105  
R106

Q202  
R228  
C213  
R224  
R230  
R229  
R226  
R225  
R222  
R223  
R224  
R225  
R226  
R227  
R228  
R229  
R230

C205  
C210  
R200  
C200  
C203  
C204  
C205  
C206  
C207  
C208  
C209  
C210  
C211  
C212  
C213  
C214  
C215  
C216  
C217  
C218  
C219  
C220  
C221  
C222  
C223  
C224  
C225  
C226  
C227  
C228  
C229  
C230

Q300  
R323  
R322  
R321  
R320  
R319  
R318  
R317  
R316  
R315  
R314  
R313  
R312  
R311  
R310  
R309  
R308  
R307  
R306  
R305  
R304  
R303  
R302  
R301  
R300  
R299  
R298  
R297  
R296  
R295  
R294  
R293  
R292  
R291  
R290  
R289  
R288  
R287  
R286  
R285  
R284  
R283  
R282  
R281  
R280  
R279  
R278  
R277  
R276  
R275  
R274  
R273  
R272  
R271  
R270  
R269  
R268  
R267  
R266  
R265  
R264  
R263  
R262  
R261  
R260  
R259  
R258  
R257  
R256  
R255  
R254  
R253  
R252  
R251  
R250  
R249  
R248  
R247  
R246  
R245  
R244  
R243  
R242  
R241  
R240  
R239  
R238  
R237  
R236  
R235  
R234  
R233  
R232  
R231  
R230  
R229  
R228  
R227  
R226  
R225  
R224  
R223  
R222  
R221  
R220  
R219  
R218  
R217  
R216  
R215  
R214  
R213  
R212  
R211  
R210  
R209  
R208  
R207  
R206  
R205  
R204  
R203  
R202  
R201  
R200  
R199  
R198  
R197  
R196  
R195  
R194  
R193  
R192  
R191  
R190  
R189  
R188  
R187  
R186  
R185  
R184  
R183  
R182  
R181  
R180  
R179  
R178  
R177  
R176  
R175  
R174  
R173  
R172  
R171  
R170  
R169  
R168  
R167  
R166  
R165  
R164  
R163  
R162  
R161  
R160  
R159  
R158  
R157  
R156  
R155  
R154  
R153  
R152  
R151  
R150  
R149  
R148  
R147  
R146  
R145  
R144  
R143  
R142  
R141  
R140  
R139  
R138  
R137  
R136  
R135  
R134  
R133  
R132  
R131  
R130  
R129  
R128  
R127  
R126  
R125  
R124  
R123  
R122  
R121  
R120  
R119  
R118  
R117  
R116  
R115  
R114  
R113  
R112  
R111  
R110  
R109  
R108  
R107  
R106  
R105  
R104  
R103  
R102  
R101  
R100  
R99  
R98  
R97  
R96  
R95  
R94  
R93  
R92  
R91  
R90  
R89  
R88  
R87  
R86  
R85  
R84  
R83  
R82  
R81  
R80  
R79  
R78  
R77  
R76  
R75  
R74  
R73  
R72  
R71  
R70  
R69  
R68  
R67  
R66  
R65  
R64  
R63  
R62  
R61  
R60  
R59  
R58  
R57  
R56  
R55  
R54  
R53  
R52  
R51  
R50  
R49  
R48  
R47  
R46  
R45  
R44  
R43  
R42  
R41  
R40  
R39  
R38  
R37  
R36  
R35  
R34  
R33  
R32  
R31  
R30  
R29  
R28  
R27  
R26  
R25  
R24  
R23  
R22  
R21  
R20  
R19  
R18  
R17  
R16  
R15  
R14  
R13  
R12  
R11  
R10  
R9  
R8  
R7  
R6  
R5  
R4  
R3  
R2  
R1  
R0





94V-0 34 17-S 10 TP1 CHI\_A CH2\_A TP3 TP5 CH3\_A TP7 CH4\_A H901MCP\_S2

1 2  
CN1

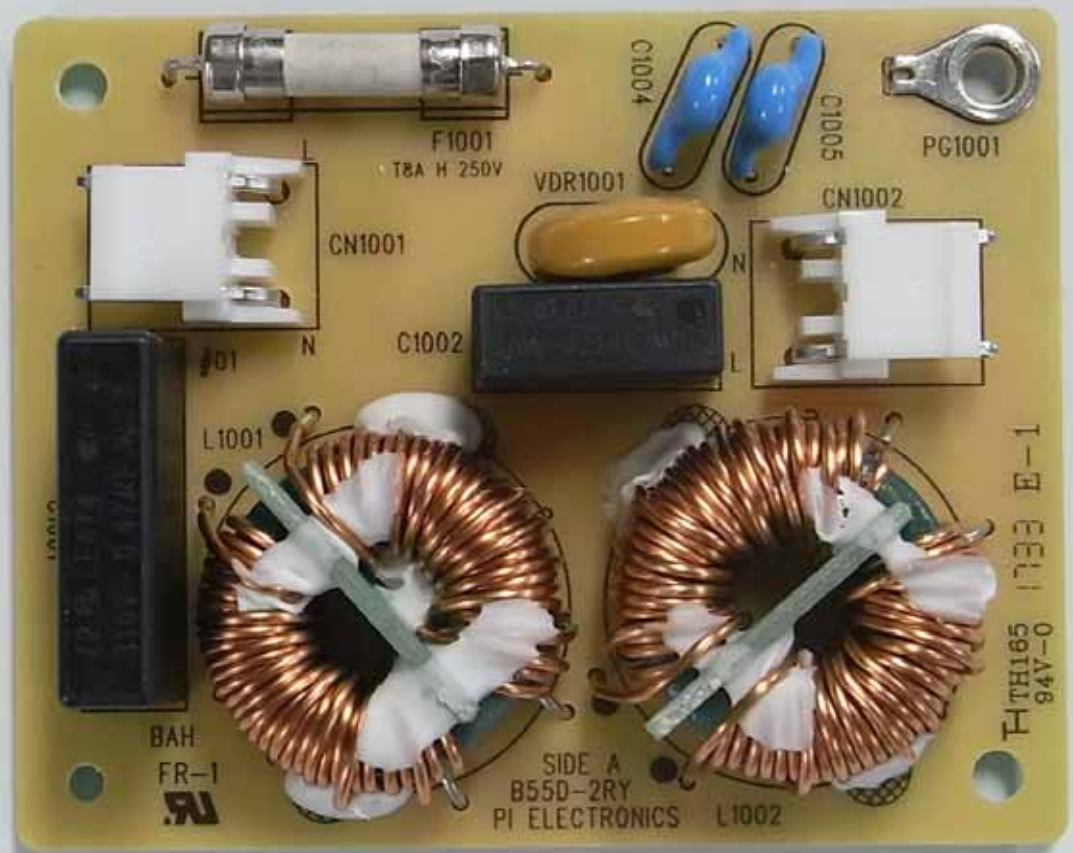
1 2  
CN2

EPSON

EC 1 2 3 4 5 6 CH1\_K TP2 CH2\_K TP4 TP6 CH3\_K TP8 CH4\_K Ver A B C D E F







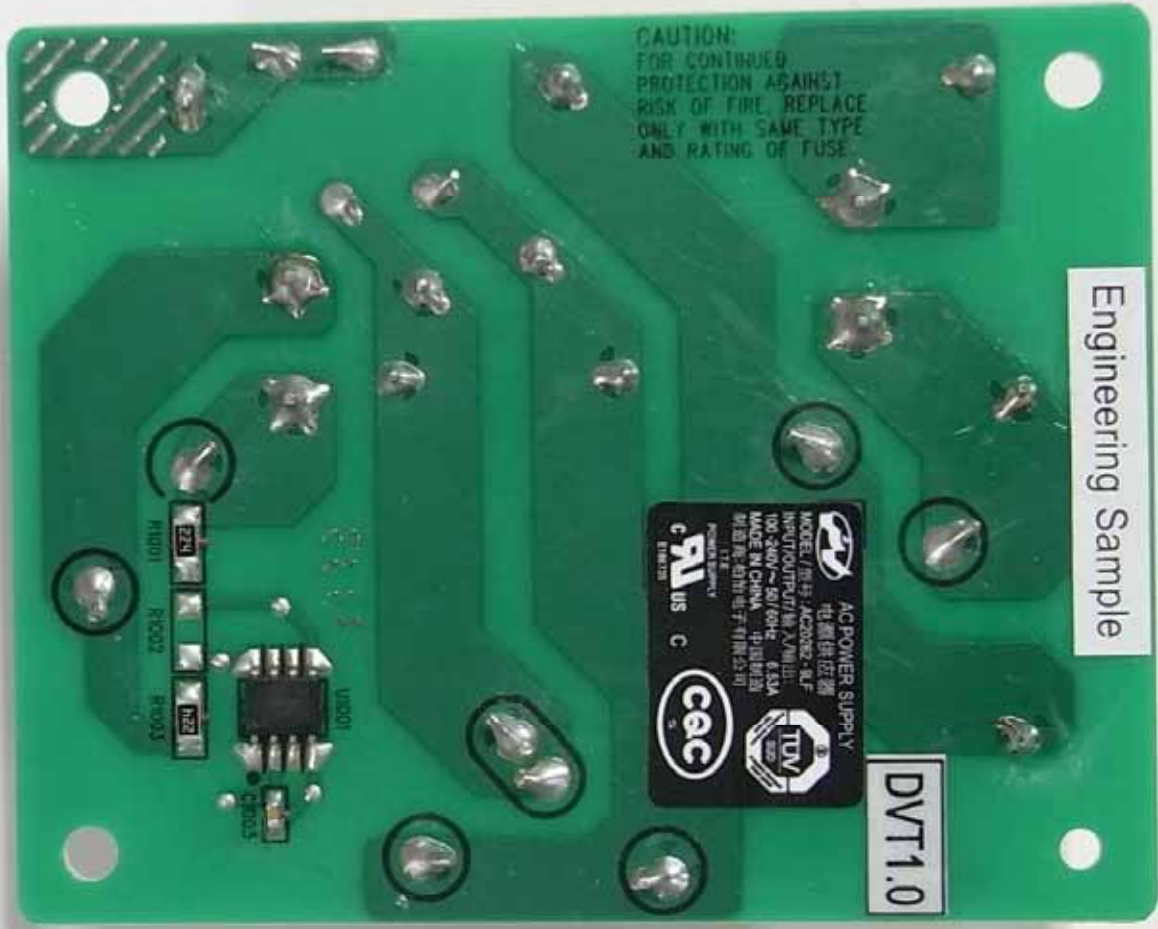
Engineering Sample

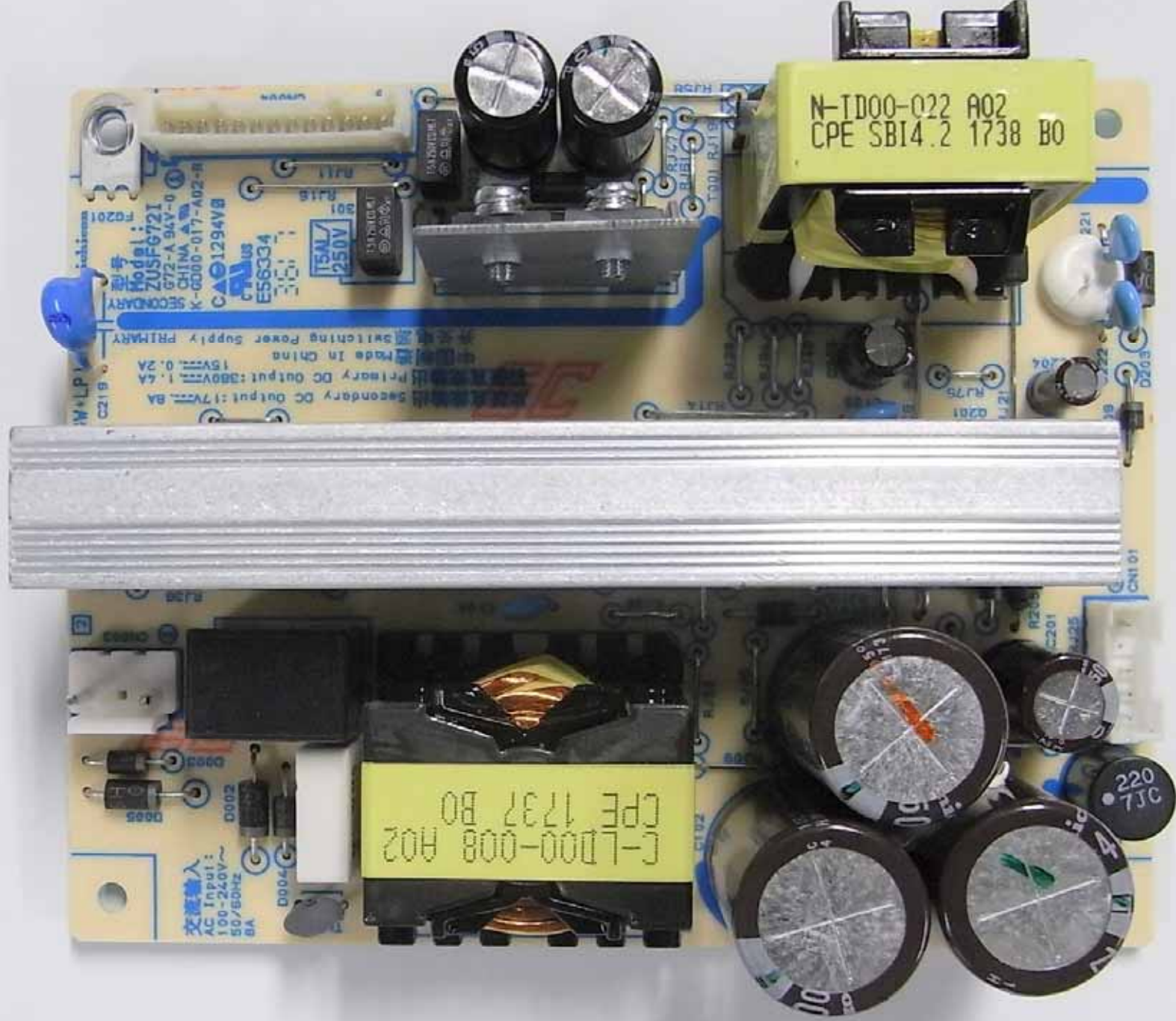
CAUTION:  
FOR CONTINUED  
PROTECTION AGAINST  
RISK OF FIRE, REPLACE  
ONLY WITH SAME TYPE  
AND RATING OF FUSE

DVT1.0

AC POWER SUPPLY  
电源供应器  
MODEL / 型号: AC0002-ULF  
INPUT/OUTPUT/输入/输出: 100-240V ~ 50/60Hz / 5V 1.5A  
MADE IN CHINA / 产地: 中国  
WARRANTY / 保修: 3 YEARS / 三年

UL US C  
CAC  
TUV





C-LD00-008 A02  
CPE 1737 B0

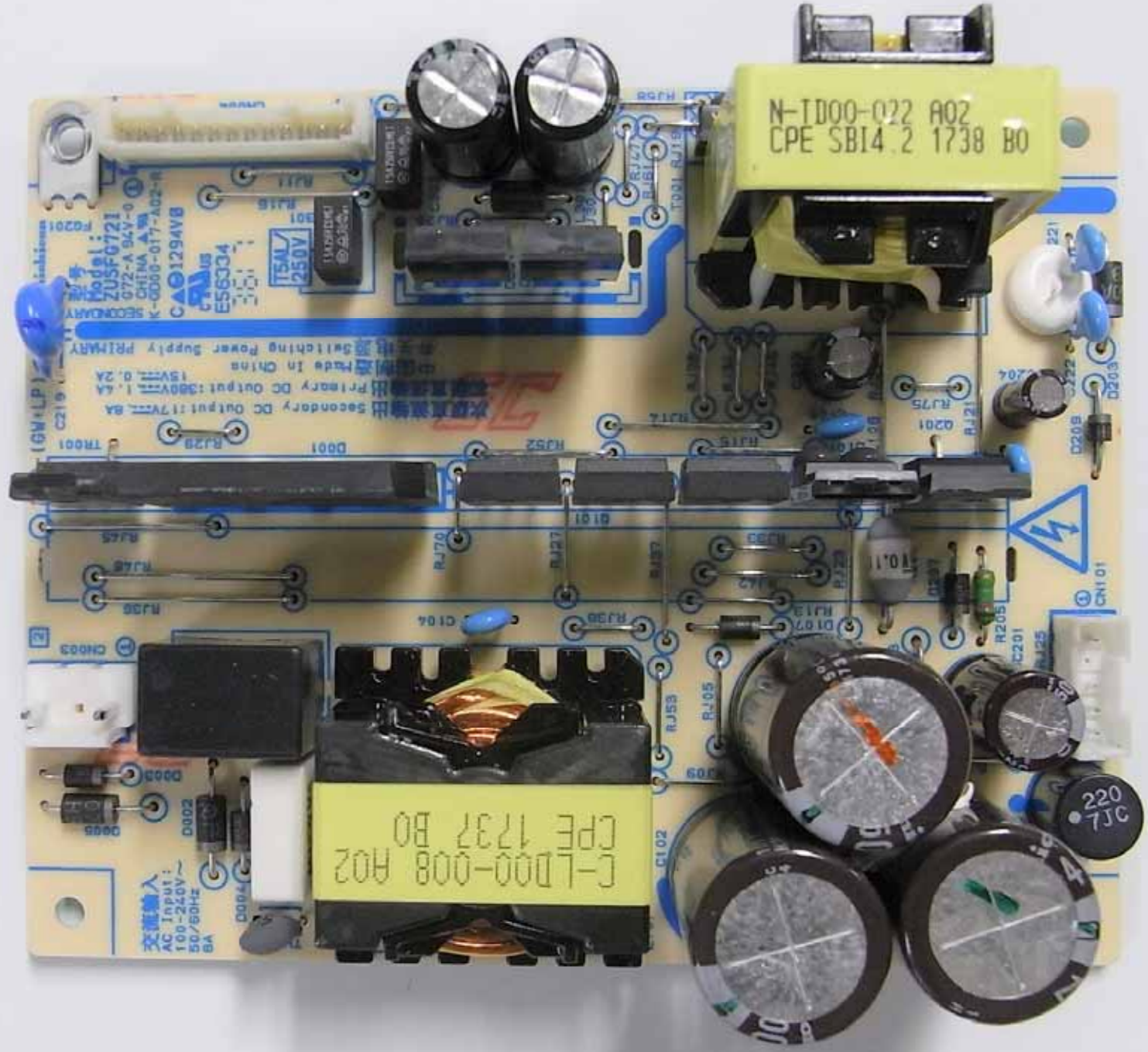
N-TD00-022 A02  
CPE SBI4.2 1738 B0

Model: ZUSFG721  
G72-A 94V-0  
CHINA A  
K-G000-017-A02-R  
CAO1294VB  
E56334  
TSAL 250V

Secondary DC Output: 17V 1.5A  
Primary DC Output: 380V 1.5A  
Switching Power Supply PRIMARY  
Made in China

交流输入  
AC Input:  
100-240V~  
50/60HZ  
5A

220  
7JC



交流输入  
AC Input:  
100-240V~  
50/60Hz  
BA

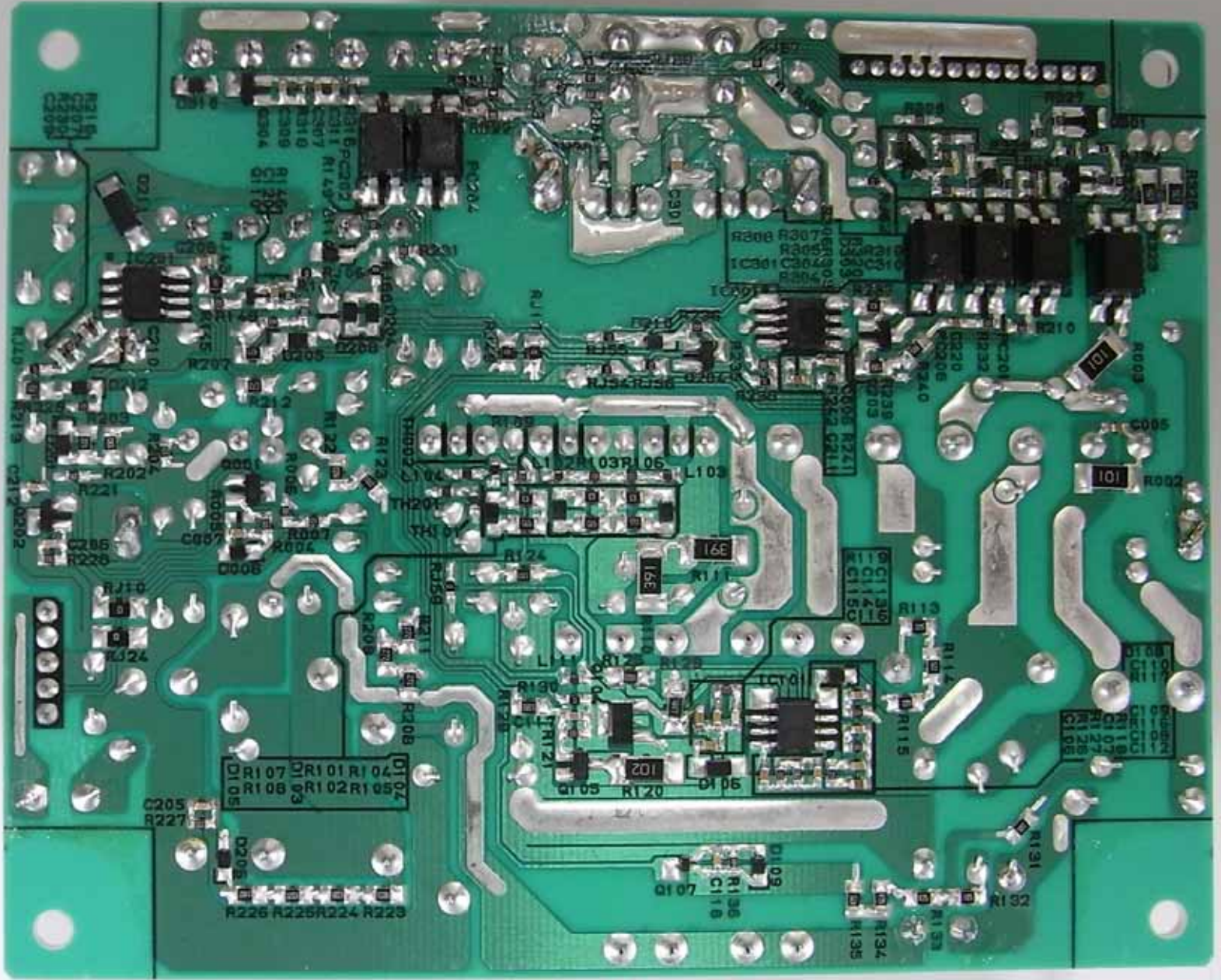
Model: ZUSF0721  
G72-A 94V-0  
CHINA  
K-0000-017-A02-R  
CAO1294VB  
E56334

Secondary DC Output: 17V 1.8A  
Primary DC Output: 380V 1.4A  
15W  
Made in China  
Switching Power Supply PRIMARY

C-LD00-008 A02  
CPE 1737 B0

N-TD00-022 A02  
CPE SBI4.2 1738 B0







DVT1.0 Engineering Sample



2200739005H

PC2001

PC2002

PRI.

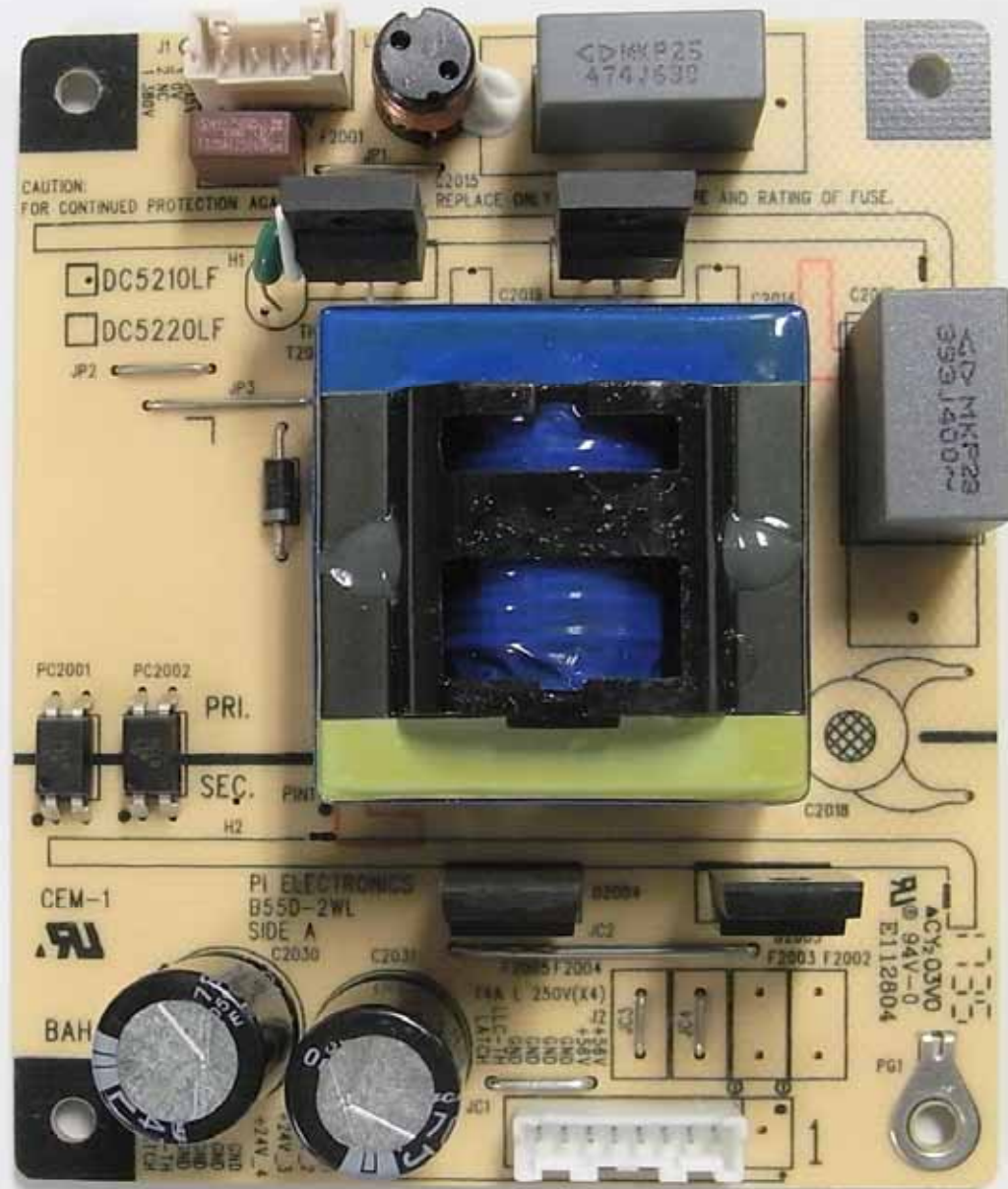
SEC.

H2

H3

C2018

WAVELENGTH  
1400NM







DC5210LF

DC5220LF

PRI.

SEC.

Q7003  
R2008  
R2058

R2004 R2005

R2002  
R2010

R2025  
R2028

R2020  
R2054  
R2009

R2074  
Q7006  
C2021  
C2007

R2010 R2048 R2004 R2005

C2008  
U2007  
C2009  
R2081

R2041  
C2023  
R2048  
R2045  
R2044

R2003  
R2039  
R2053  
C2041  
C2020  
C2040  
R2041

C2029

R2033  
R2034

R2035  
R2036

C2032  
C2033

C2028  
R2051  
R2052  
R2053

R2001  
R2011

R2004  
R2005

100

10k

10k

100

100

100

100

100

100

100

100

100

100

100

100

100

100

100



Source Search



Computer

HDMI/Video

USB

LAN

1 2 3

Link Menu

4 5 6

Aspect

7 8 9

Auto

0

ID

Menu

Esc

User

Pointer



Page

E-Zoom

Volume

A/V Mute

Split

Freeze

Home

EPSON

Projector

3 6 7 8 9 10 11 12 13 14 15 16 17 18 19 20 21 22 23 24 25 26 27 28 29 30 31 32 33 34 35 36 37 38 39 40 41 42 43 44 45 46

6 7 8 9 10 11 12 13 14 15 16 17 18 19 20 21 22 23 24 25 26 27 28 29 30 31 32 33

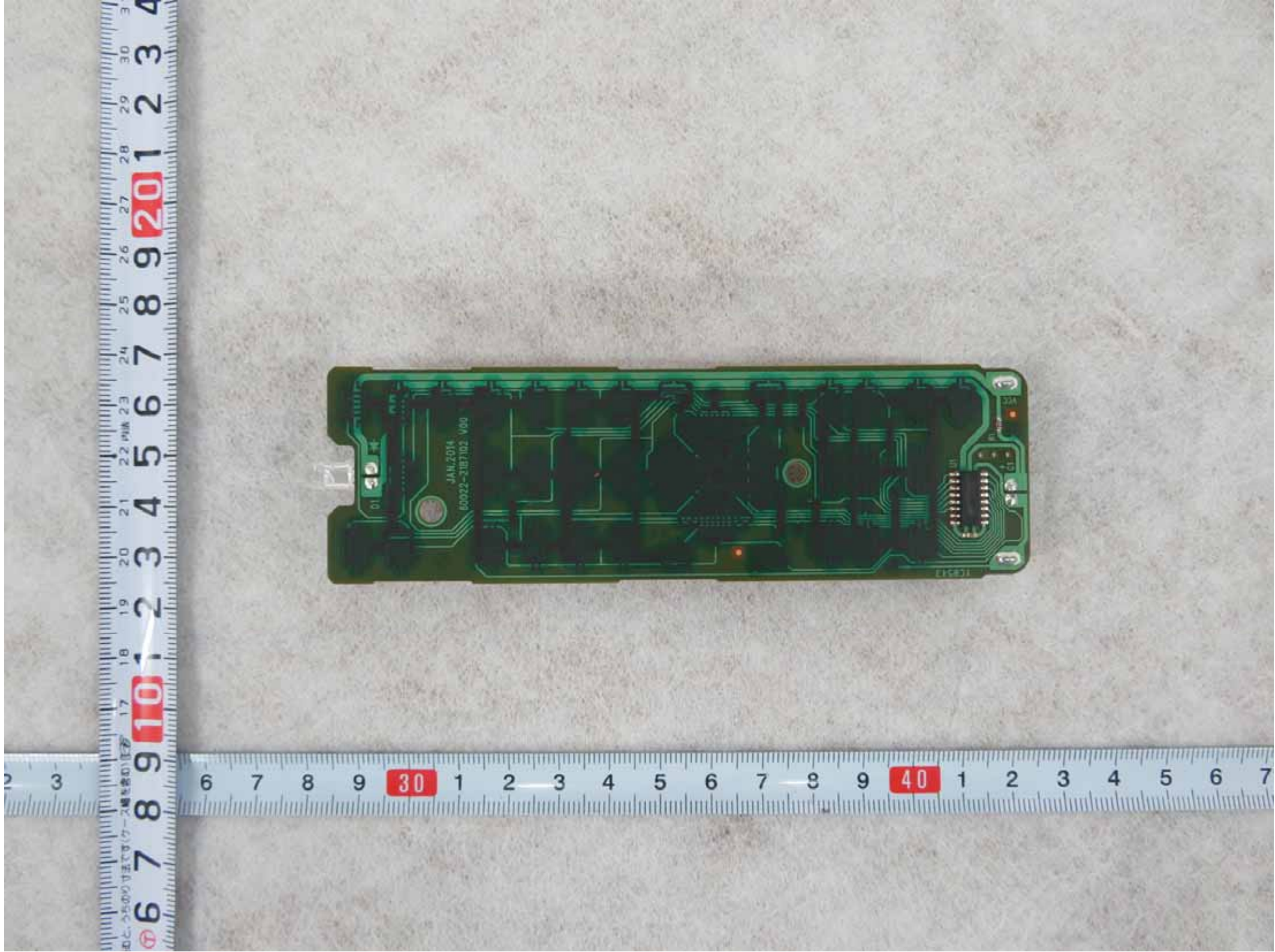


REMOTE CONTROLLER: 218906000

This device complies with Part 15 of the FCC Rules.  
Operation is subject to the following two conditions:  
(1) This device may not cause harmful interference, and  
(2) This device must accept any interference received,  
including interference that may cause undesired operation.  
Use two manganese batteries(AA).

SEIKO EPSON CORP.  
Made in CHINA





01  
JAN.2014  
60022-3187102\_V09

IC517

22µF

22µF

22µF

22µF

22µF

22µF

22µF

22µF

22µF

22µF

22µF

22µF

22µF

22µF

22µF

22µF

22µF

22µF

22µF

22µF

22µF

22µF

22µF

22µF

22µF

22µF

22µF

22µF

22µF

22µF

